

Metalise it...

Our Service:

"Technical and shiny Nickel coatings offer the most cost-effective solution"



Metalise it... plating options

Technical metal finishes :

Technical coatings are not designed for decorative purposes

oversize: → #2 **technical NICKEL** (standard / #2.2 brushed / #2.4 shiny)

width: 400mm → #5 **Black technical NICKEL** (standard / #5.4 black shiny)

Decorative metal finishes :

oversize: → #1 **COPPER** (#1.1 high gloss / #1.2 brushed / #1.3 satin / #1.5 pearlescent)

→ #4 **High gloss NICKEL** (#4.1 high gloss / #4.2 brushed / #4.3 satin / #4.5 pearlescent)

width: 400mm → #6 **Black high gloss NICKEL** (#6.1 black high gloss / #6.3 satin / #6.5 pearlescent)

Size limit:



→ Please contact 3DDC Ltd. for special plating as precious metals / finishing requirements!

on request: → Precious metal finishes (#7.1 Gold, #8.1 Chrome, #9.1 Silver,...)

YOUR contact:

Graham Barton / Alex Michniak

e/mail: projects@3ddc.eu

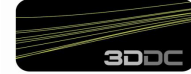
Tel: +44 (0) 1234 391894

CONFIDENTIAL

PROPRIETARY INFORMATION. The documents and the Information contained herein are proprietary and are not to be reproduced, used and disclosed to others or for any other purpose except as specifically authorised in writing by 3DDC Ltd .

For further information about our Metalise it... technology take a look at www.3ddc.eu

Metalise it... surface options



surface options: → #.1 high gloss polished / #.2 brushed / #.3 satin / #.4 shiny (unpolished) / #.5 pearlescent

EXAMPLES
for decorative surface options:



#8.1 High gloss Chrome



#8.2 Brushed h.g. Chrome



#8.3 Satin Chrome



#2.4 Shiny Nickel



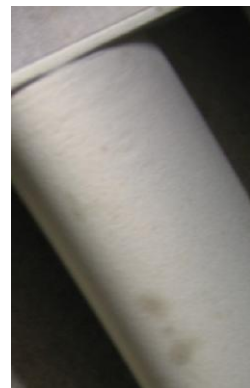
#6.5 Pearlescent (Black)

*Every imperfection in the RP part, casting or machined parts will be visible / magnified by the metal layer.

EXAMPLES
for technical plating on structural RP parts:



Technical Copper plating on unfinished/rough SLA



Technical Nickel plating on finished SLA



Shiny Nickel plating on SLS



Technical plating on FDM (rough)



Technical plating on FDM (fine tip)

CONFIDENTIAL

PROPRIETARY INFORMATION. The documents and the Information contained herein are proprietary and are not to be reproduced, used and disclosed to others or for any other purpose except as specifically authorised in writing by 3DDC Ltd.

For further information about our Metalise it... technology take a look at www.3ddc.eu